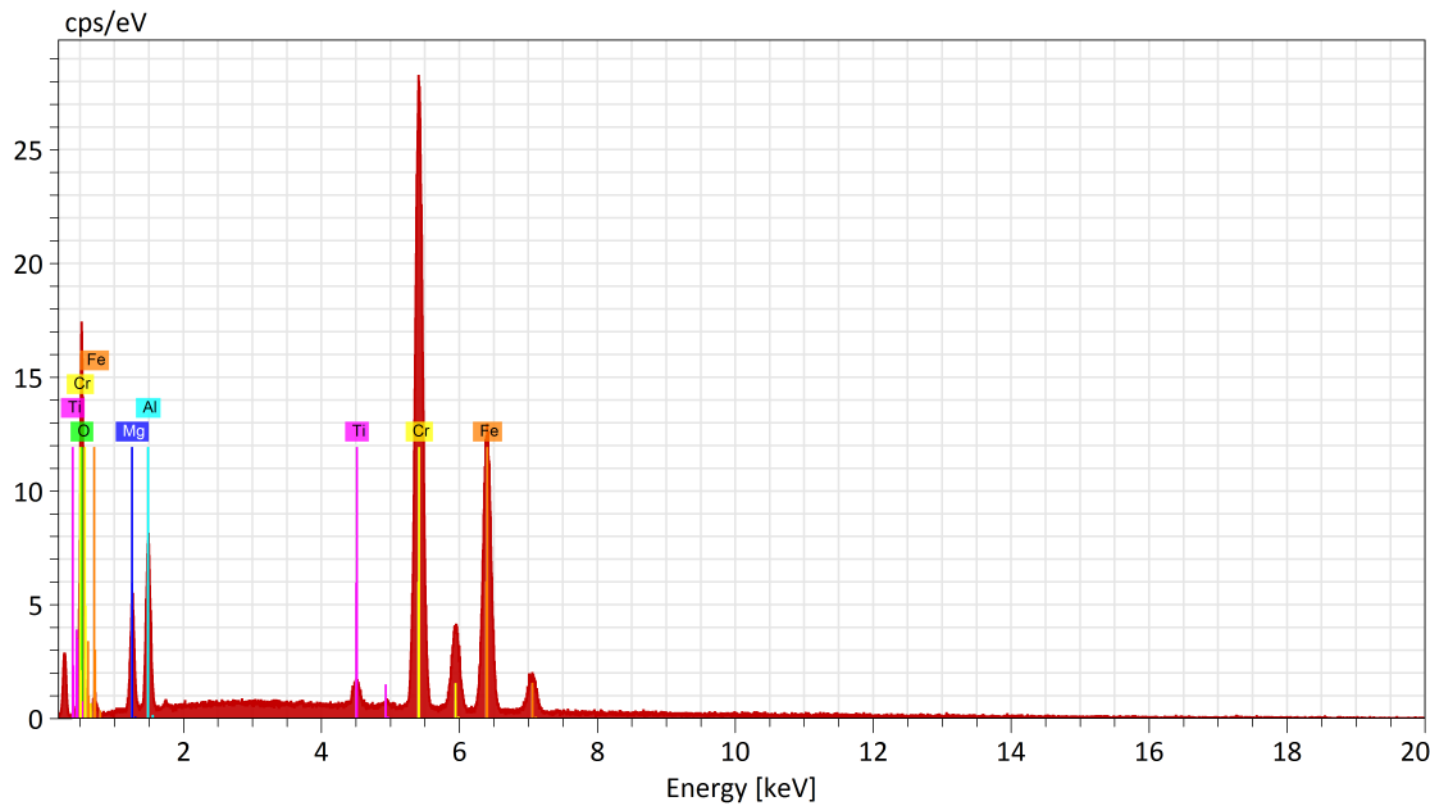


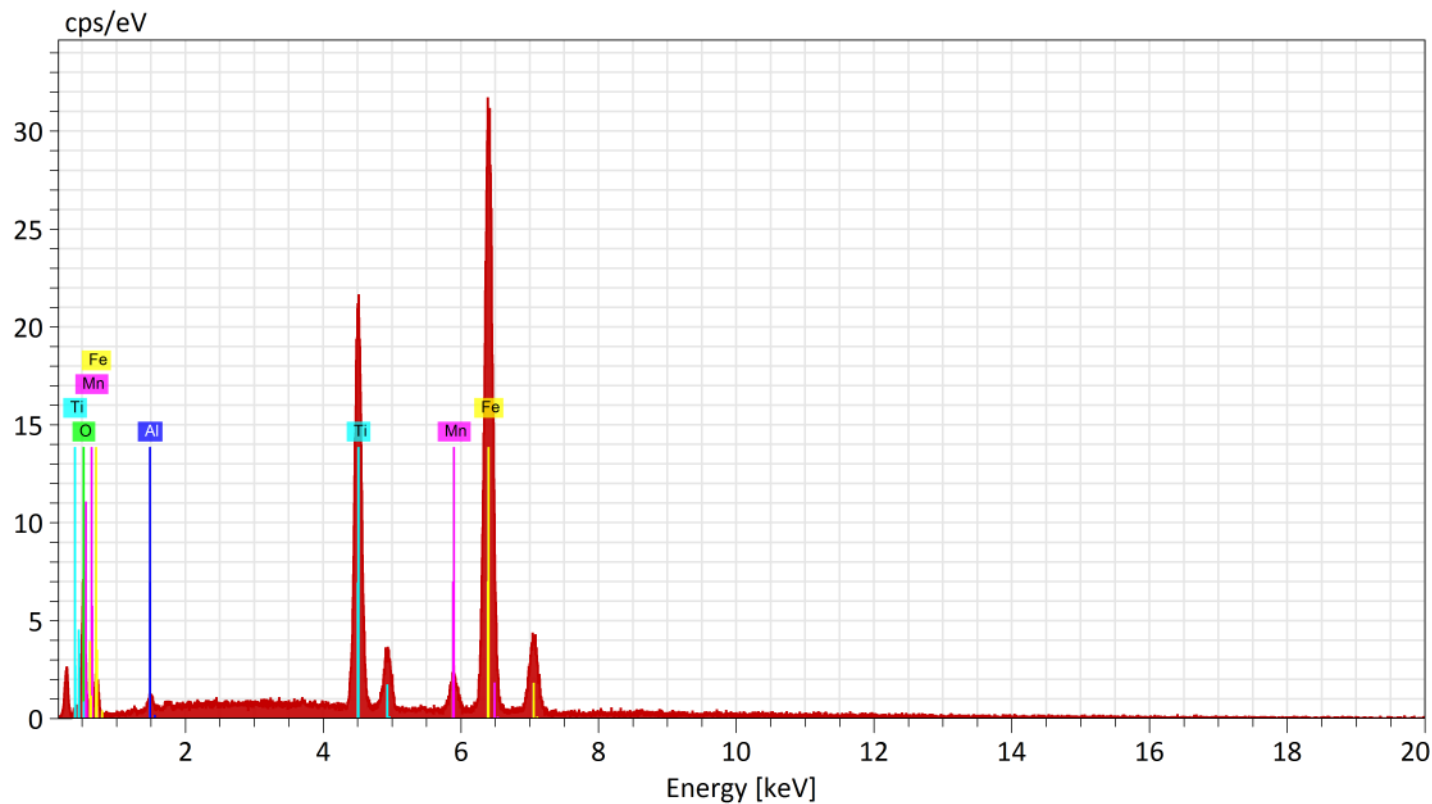
SEM-EDS Lab, Palaeontology Division, Geological Survey Of India(SR)
Hyderabad



Normalized stoichiometric concentration [%]

Spectrum	Oxygen	MgO	Al ₂ O ₃	TiO ₂	Cr ₂ O ₃	FeO
CMT/011/700.00	8.26	13.09	1.71	47.36	29.57	

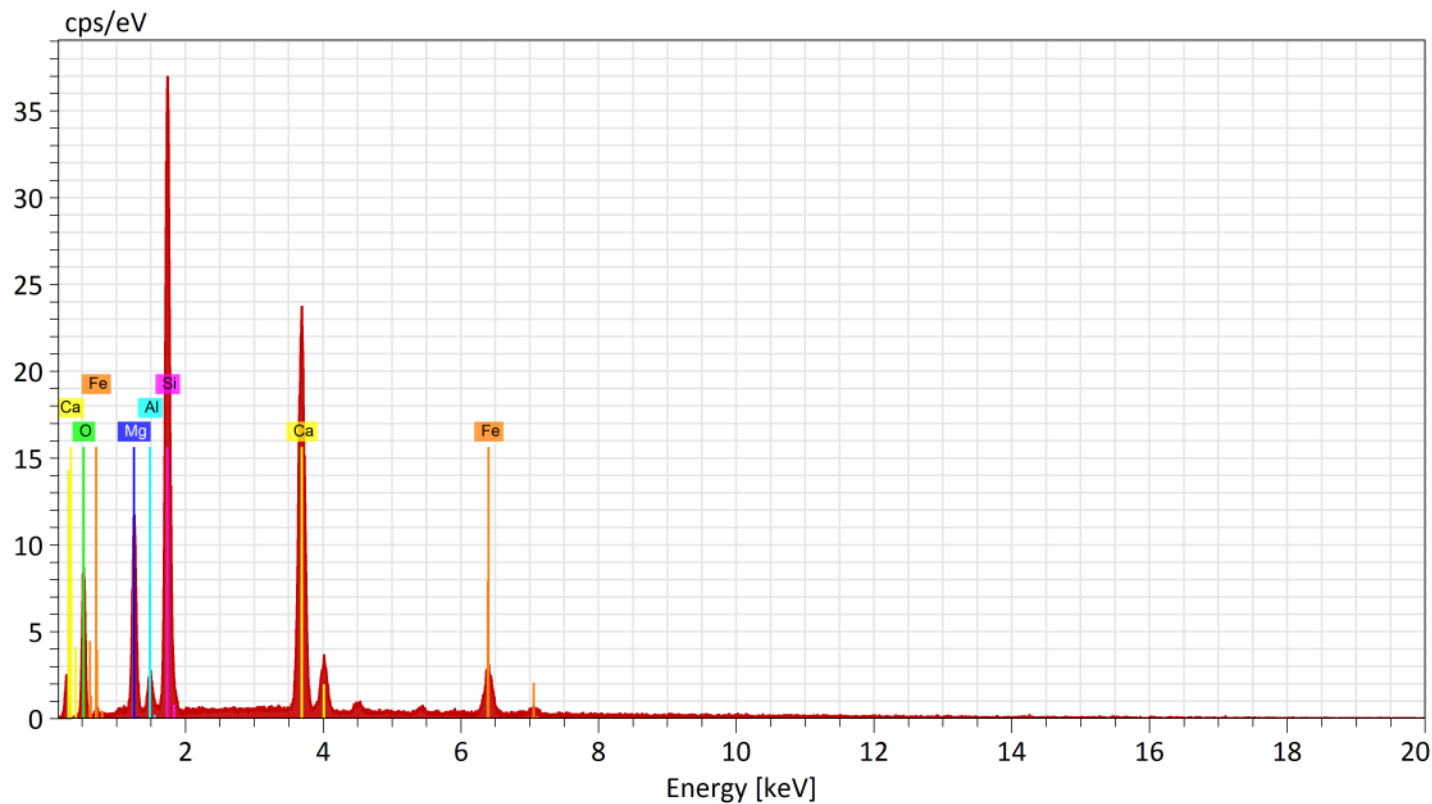
SEM-EDS Lab, Palaeontology Division, Geological Survey Of India(SR)
Hyderabad



Normalized stoichiometric concentration [%]

Spectrum	Oxygen	Al ₂ O ₃	TiO ₂	MnO	FeO
CMT/011/700.00	1.61	32.06	3.13	63.20	

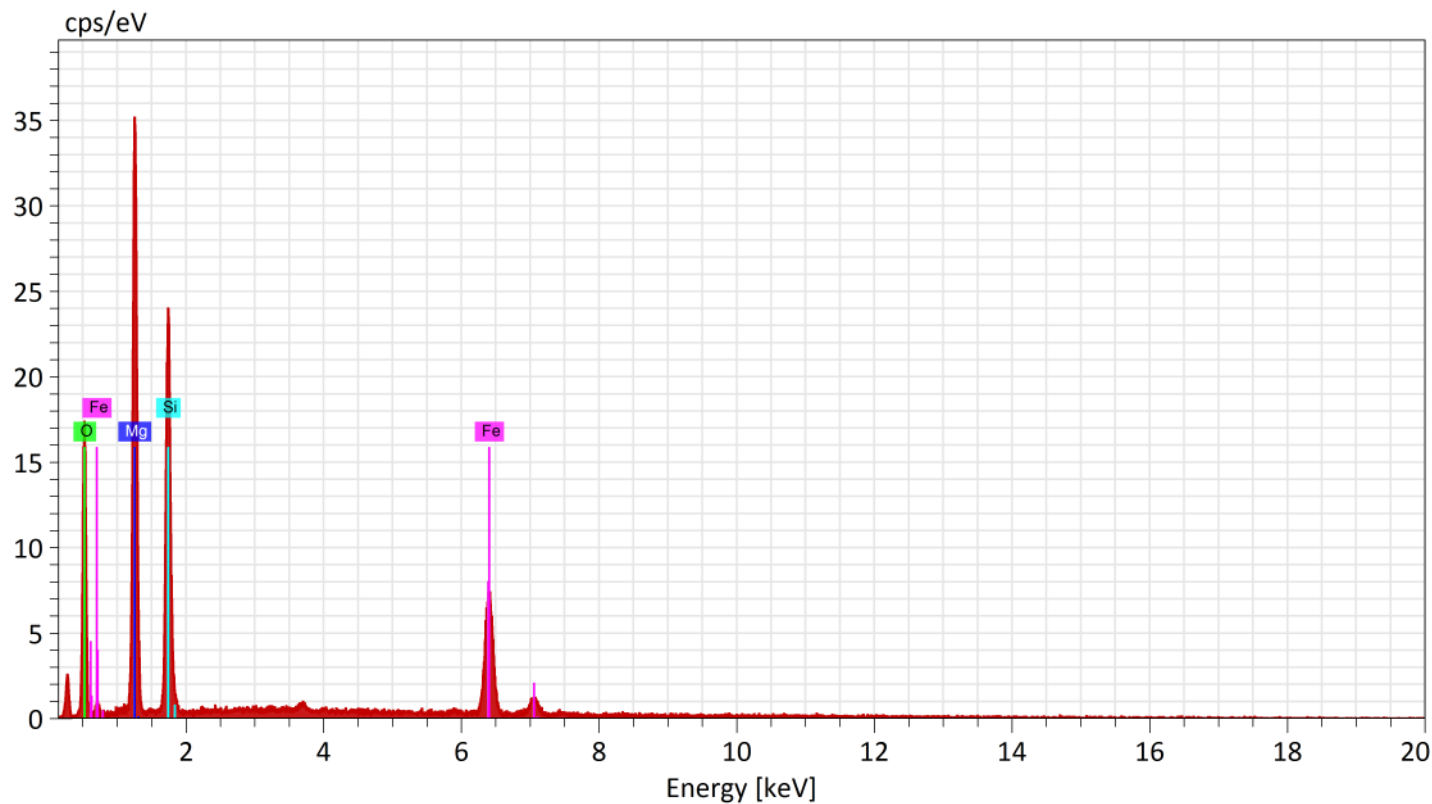
SEM-EDS Lab, Palaeontology Division, Geological Survey Of India(SR)
Hyderabad



Normalized stoichiometric concentration [%]

Spectrum	Oxygen	MgO	Al2O3	SiO2	CaO	FeO
CMT/011/700.00		14.74	3.27	51.08	25.80	5.10

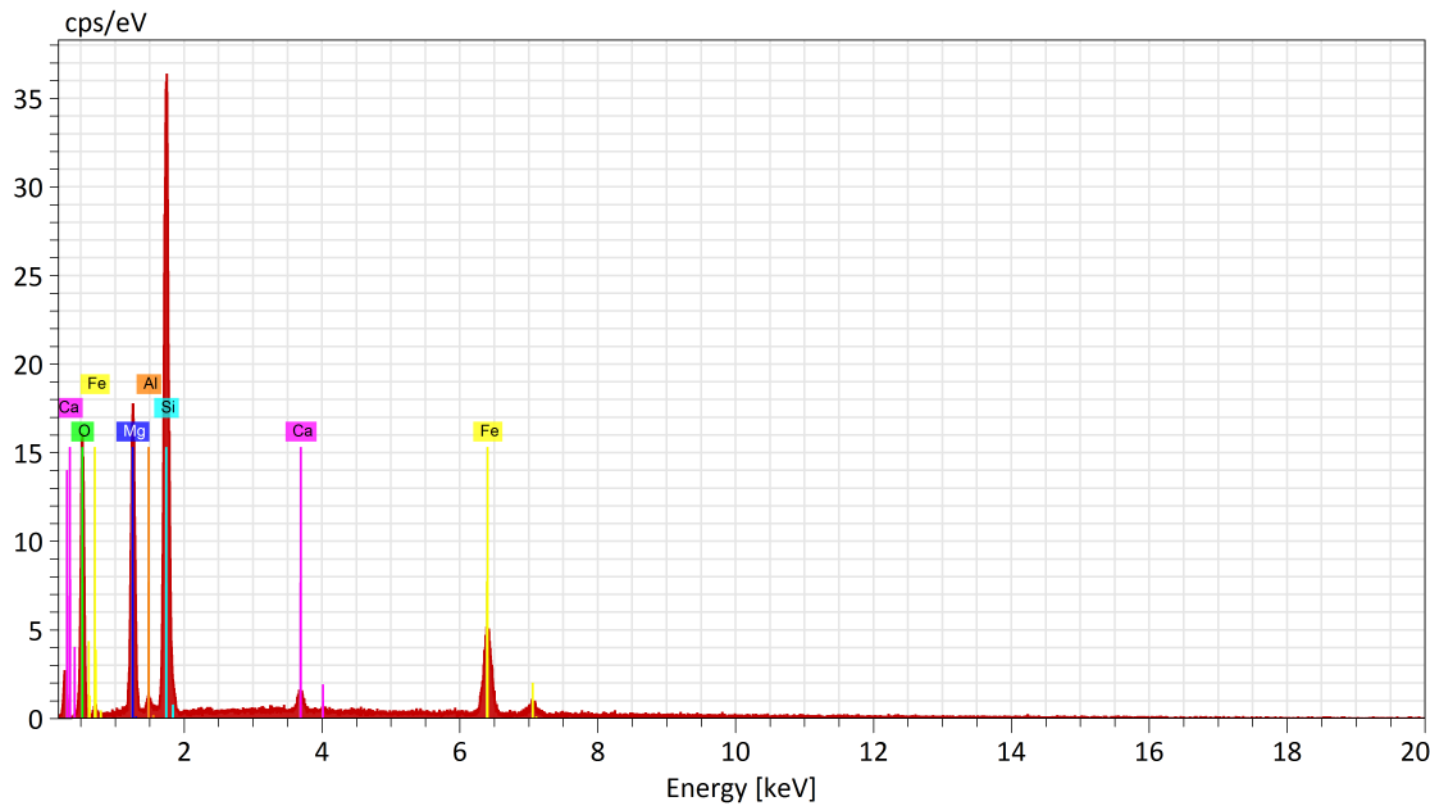
SEM-EDS Lab, Palaeontology Division, Geological Survey Of India(SR)
Hyderabad



Normalized stoichiometric concentration [%]

Spectrum	Oxygen	MgO	SiO2	FeO
CMT/011/700.00	38.24	48.37	13.39	

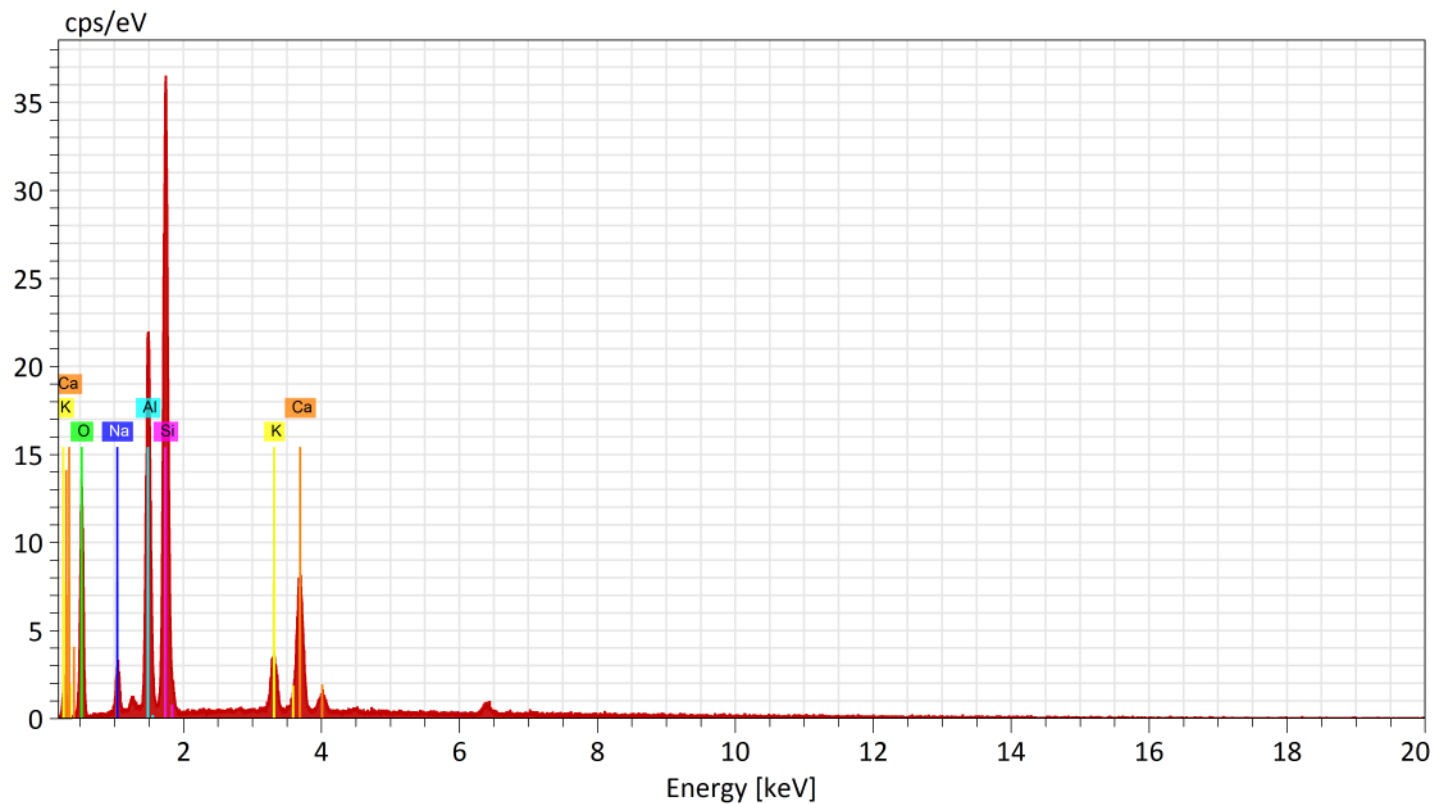
SEM-EDS Lab, Palaeontology Division, Geological Survey Of India(SR)
Hyderabad



Normalized stoichiometric concentration [%]

Spectrum	Oxygen	MgO	SiO2	CaO	FeO	Al2O3
CMT/011/700.00	25.25	62.48	1.35	9.14	1.77	

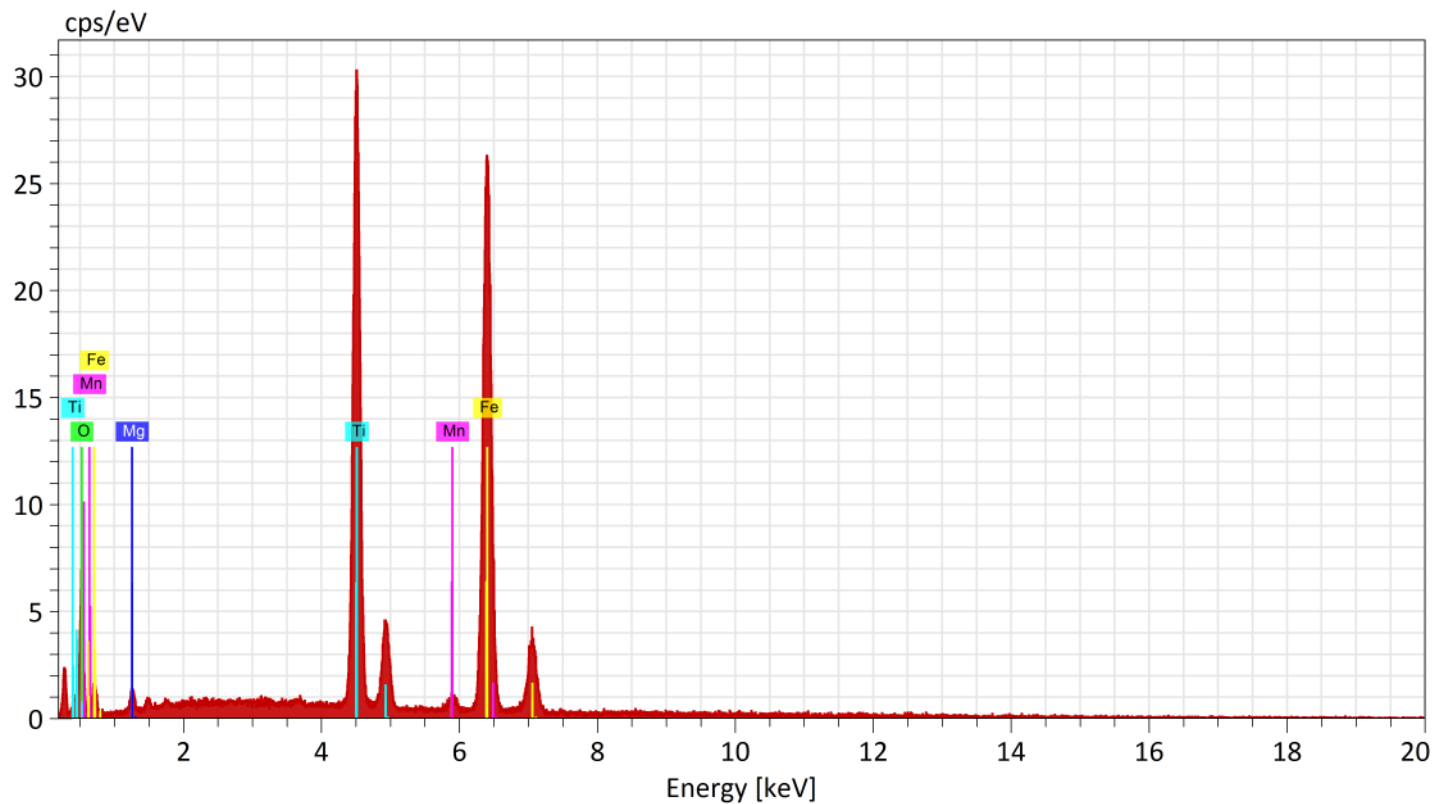
SEM-EDS Lab, Palaeontology Division, Geological Survey Of India(SR)
Hyderabad



Normalized stoichiometric concentration [%]

Spectrum	Oxygen	Na ₂ O	Al ₂ O ₃	SiO ₂	K ₂ O	CaO
CMT/011/700.00	4.53	26.88	56.42	2.78	9.40	

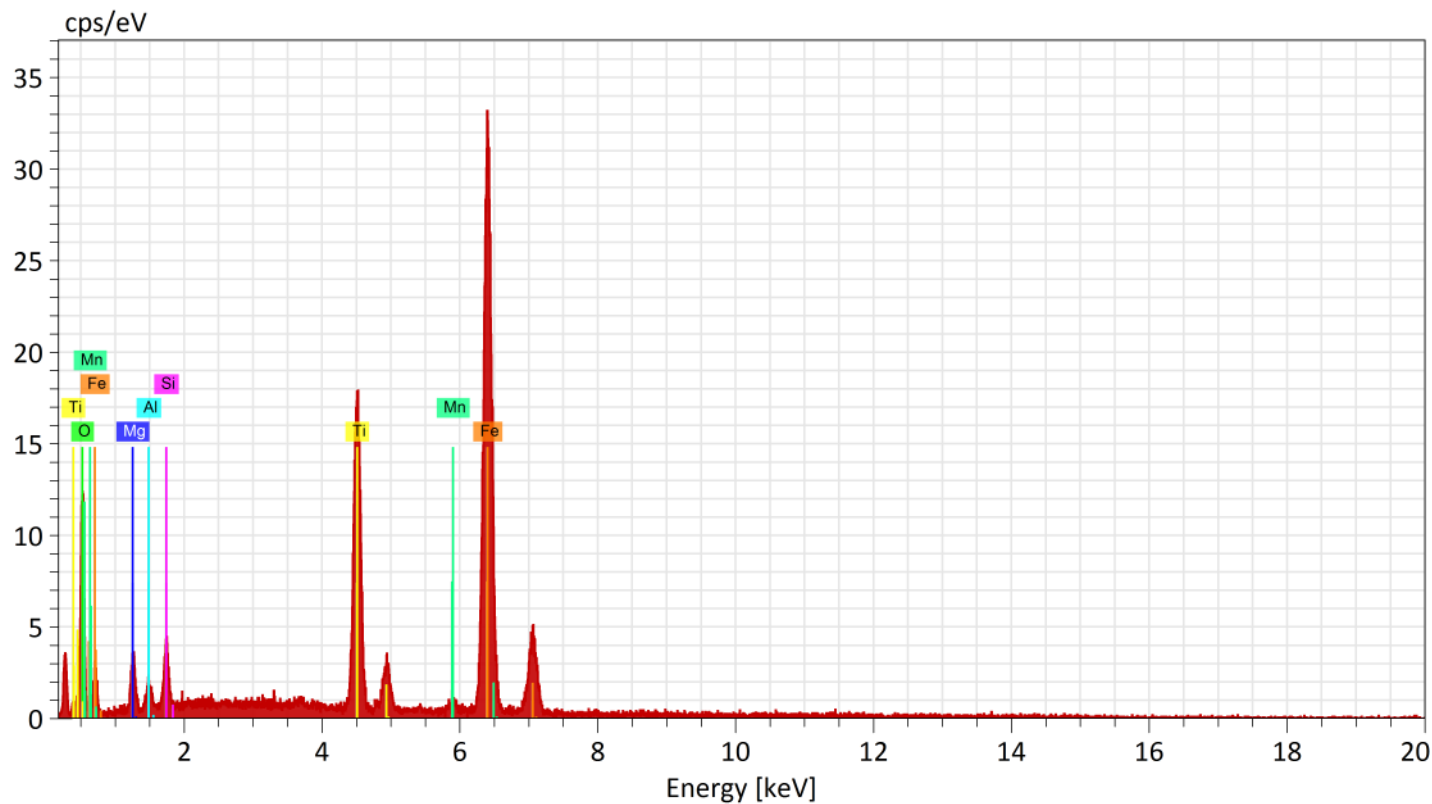
SEM-EDS Lab, Palaeontology Division, Geological Survey Of India(SR)
Hyderabad



Normalized stoichiometric concentration [%]

Spectrum	Oxygen	MgO	TiO2	MnO	FeO
CMT/011/700.00	2.83	43.77	0.96	52.43	

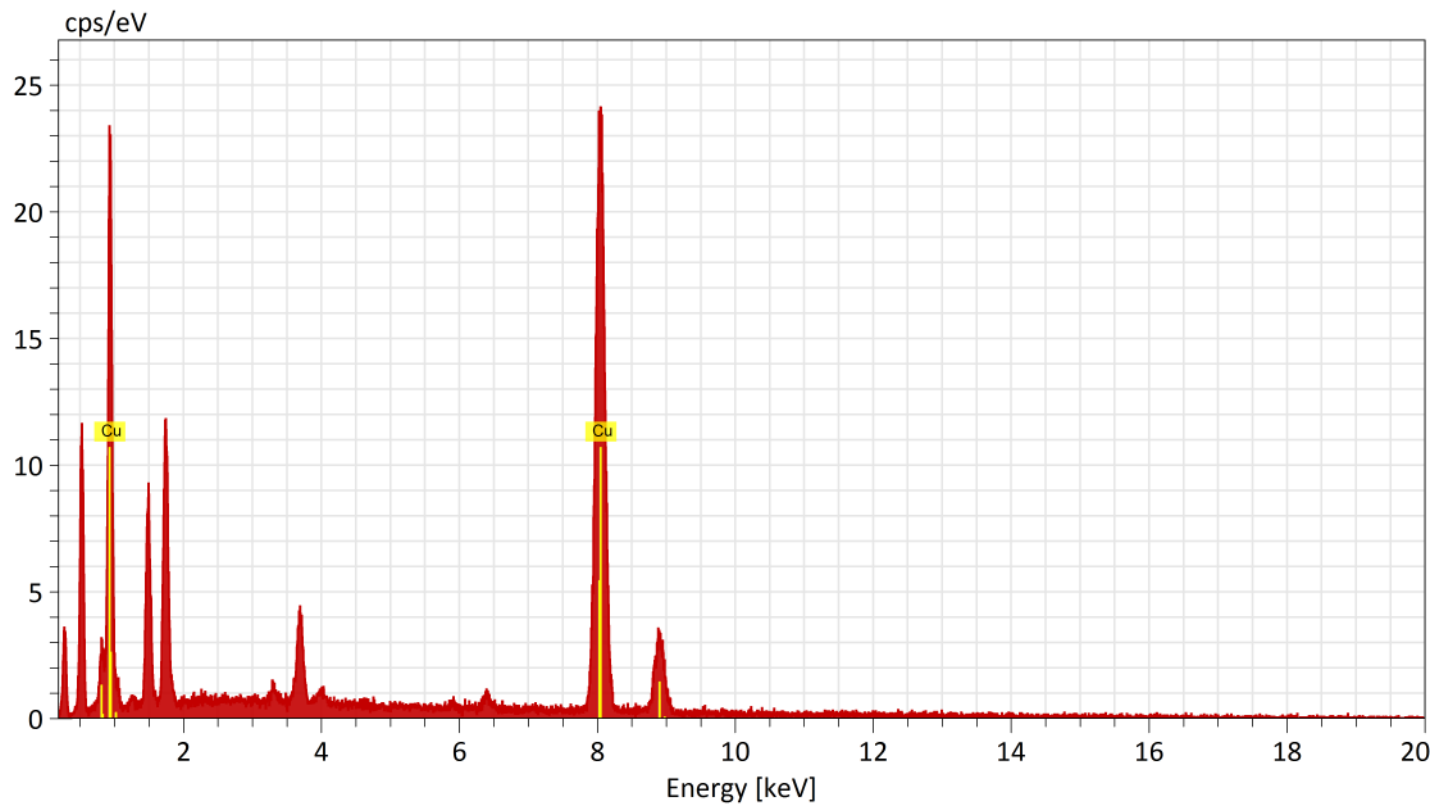
SEM-EDS Lab, Palaeontology Division, Geological Survey Of India(SR)
Hyderabad



Normalized stoichiometric concentration [%]

Spectrum	Oxygen	MgO	Al ₂ O ₃	SiO ₂	TiO ₂	FeO	MnO
CMT/011/700.00	4.73	2.08	4.69	26.02	61.77	0.71	

SEM-EDS Lab, Palaeontology Division, Geological Survey Of India(SR)
Hyderabad



Normalized stoichiometric concentration [%]

Spectrum	Copper
CMT/011/70100.00	